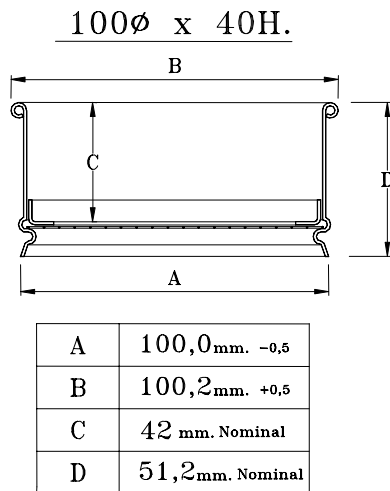




SIEVES 100mm.Ø x 40mm.H STAINLESS STEEL FRAME



- * **For small sample sizes**
- * **Recommended by: ISO, ASTM and BS.**
- * **Each sieve is marked with a serial number to ensure traceability**
- * **Delivered with a Certificate of Compliance according to 2.1 EN 10204, at no extra charge**
- * **Certificate of Calibration indicating uncertainty of sieve (on request)**

IMPORTANT NOTE: THE SIEVES OF 100mm.Ø x 40mm. HEIGHT DO NOT FIT TOGETHER WITH THE SIEVES OF 100mm.Ø x 23mm. HEIGHT

WEIGHT : From 110g to 150g depending on the mesh..

RECOMMENDED VOLUME OF TEST SAMPLE : Up to 50 cm³.

RANGE OF MESH OPENINGS : Up to 4.00mm.# with metallic mesh.

CONFIGURATION AVAILABLE

04.1.SIEVES WITH METALLIC MESH

STANDARDS: ISO 3310.1 - ASTM E-11-95

04.1.SIEVES WITH METALLIC MESH

ISO 3310.1	ASTM E-11-95	ARTIC.No CISA	ISO 3310.1	ASTM E-11-95	ARTIC.No CISA
20 µ	No 635	0400601	1.00 mm	No 18	0409001
25 µ	No 500	0400801	1.12 mm		0409201
32 µ	No 450	0401001	1.18 mm	No 16	0409401
36 µ		0401201	1.25 mm		0409601
38 µ	No 400	0401401	1.40 mm	No 14	0409801
40 µ		0401601	1.60 mm		0410001
45 µ	No 325	0401801	1.70 mm	No 12	0410201
50 µ		0402001	1.80 mm		0410401
53 µ	No 270	0402201	2.00 mm	No 10	0410401
56 µ		0402401	2.24 mm		0410801
63 µ	No 230	0402601	2.36 mm	No 8	0411001
71 µ		0402801	2.50 mm		0411201
75 µ	No 200	0403001	2.80 mm	No 7	0411401
80 µ		0403201	3.15 mm		0411601
90 µ	No 170	0403401	3.35 mm	No 6	0411801
100 µ		0403601	3.55 mm		0412001
106 µ	No 140	0403801	4.00 mm	No 5	0412201
112 µ		0404001			
125 µ	No 120	0404201			
140 µ		0404401			
150 µ	No 100	0404601			
160 µ		0404801			
180 µ	No 80	0405001			
200 µ		0405201			
212 µ	No 70	0405401			
224 µ		0405601			
250 µ	No 60	0405801			
280 µ		0406001			
300 µ	No 50	0406201			
315 µ		0406401			
355 µ	No 45	0406601			
400 µ		0406801			
425 µ	No 40	0407001			
450 µ		0407201			
500 µ	No 35	0407401			
560 µ		0407601			
600 µ	No 30	0407801			
630 µ		0408001			
710 µ	No 25	0408201			
800 µ		0408401			
850 µ	No 20	0408601			
900 µ		0408801			

**MESH MATERIAL:
STAINLESS STEEL AISI-304**

 **msscscientific**
Chromatographie-Handel GmbH

Gneisenaustrasse 66/67 · 10961 Berlin · Germany
Fon: 030 / 6270 6087 · Fax: 030 / 6270 6089
E-Mail: info@msscscientific.de · Web: www.msscscientific.de

ACCESSORIES

DESCRIPTION	ARTIC.No CISA
*SET OF PAN & COVER	0400000
*SET OF PAN & COVER FOR WET SIEVING	0400003

ON REQUEST

• **CERTIFICATE OF CALIBRATION ACCORDING TO:**

ISO 3310
ASTM E-11
AFNOR NF X-11-504
BS 410